

**HAY LEASE GROUND
ATTACHMENT A - NEW RESERVOIR**

Sections 11, 12, 13, 14 - Township 56 - Range 19

Approximately 10 +/- acres

(Map from <http://allthingsmissouri.org/Missouri-map-room/>)

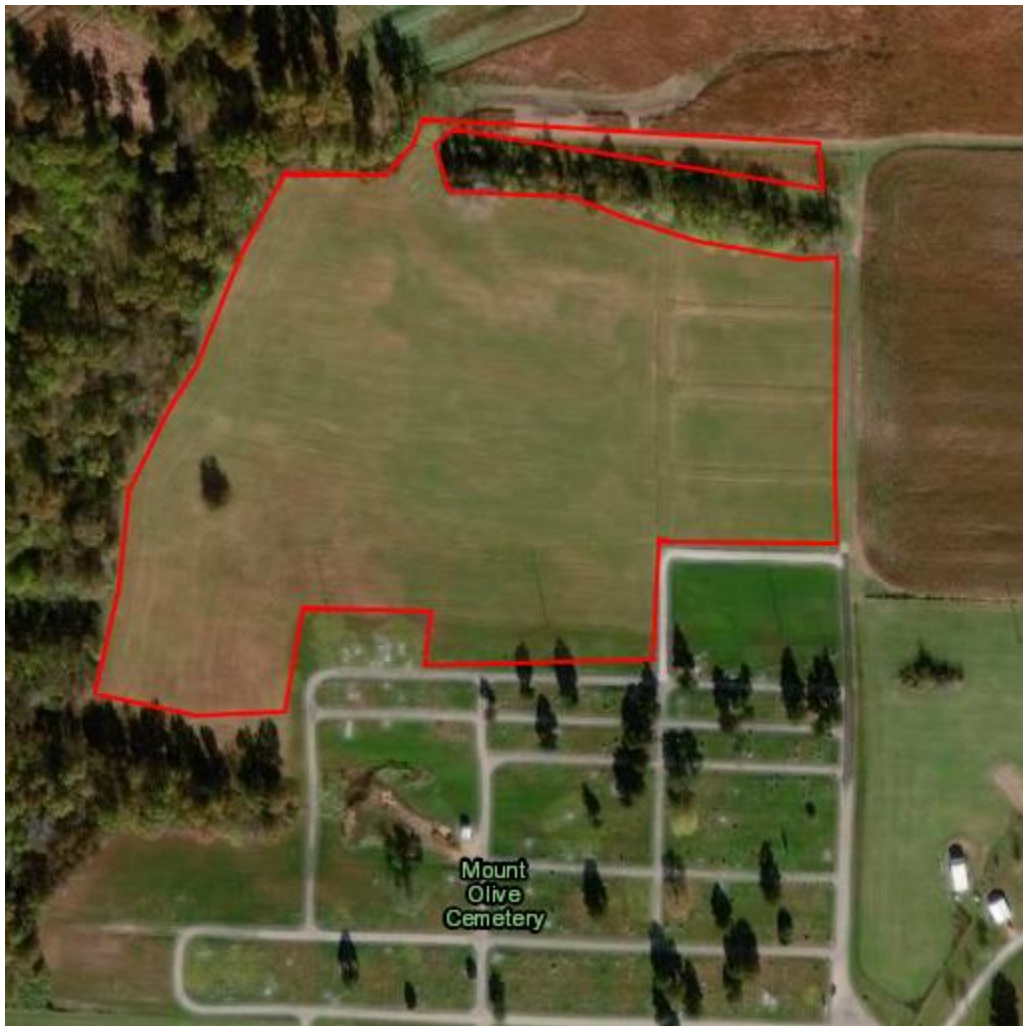


**HAY LEASE GROUND
ATTACHMENT B - MT. OLIVET CEMETERY**

Sections 30 - Township 57 - Range 18

Approximately 16 +/- acres

(Map from <http://allthingsmissouri.org/Missouri-map-room/>)



**HAY LEASE GROUND
ATTACHMENT C - WATER PLANT**

Sections 1 - Township 56 - Range 19

Approximately 3 +/- acres

(Map from <http://allthingsmissouri.org/Missouri-map-room/>)



**HAY LEASE GROUND
ATTACHMENT D - OLD RIDGECREST LAGOON SITE**

Sections 28 - Township 57 - Range 18

Approximately 3 +/- acres

(Map from <http://allthingsmissouri.org/Missouri-map-room/>)



**HAY LEASE GROUND
ATTACHMENT E - OLD CITY DUMP**

The Southeast Quarter (SE 1/4) of the Northeast Quarter (NE 1/4) and the East Half (E 1/2) of the East Half (E 1/2) of the Northeast Quarter (NE 1/4) of the Northeast Quarter (NE 1/4) of Section Twenty-Nine (29), Township Fifty-seven (57), Range Eighteen (18), in Linn County.

Approximately 19 +/- acres

(Map from <http://allthingsmissouri.org/Missouri-map-room/>)

